



2010

OFFICIAL PROGRAMME

Your Guide to all Carnival Events

Sunday 25th July to Sunday 1st August

FREE



Supported by
The National Lottery[®]
through the Big Lottery Fund



www.sandowncarnival.com

Fat Harry's

Gluten Free Fish Available



MENU

53 High Street, Sandown
www.fatharrys.com

Take Away Available

Call & Collect on

01983 401214



1

Glory Art Glass

Melville Street, Sandown, I.W. PO36 8HX

Tel: (01983) 402515

www.gloryartglass.com



2

THE Buttie Box

TAKE-AWAY

2C ALBERT ROAD, SANDOWN, IOW

TEL: 406988



Sandwiches
Baps & Wraps

~
Baguettes
Paninis &
Salad Boxes

~
Jacket Potatoes
Home Made
Pasties

3

THE ROCK SHOP

Sweets & Chocolate
Hand Made Fudge
IOW Shortbread
Preserves & Chutneys

and of course Lettered Rock



At the top of Sandown High Street
(Opposite the Pier)

4

WELCOME



WELCOME TO SANDOWN CARNIVAL

As chairperson for the very first time I'd like to welcome both residents and visitors to this year's carnivals. Following horrendous weather in 2009 and the sad loss of our much admired President and Chairman, Alan Ayres earlier this year, we are hoping that the 2010 carnival season will be a big success for all those involved in Sandown Carnival.

We are once again looking forward to a fun-packed week of carnival events, with a car treasure hunt and barbecue for the first time along with traditional favourites.

Each year the quantity and quality of those participating in the carnivals increases and this year looks set to include many spectacular entries. Sandown carnival has become one of the Islands best with an atmosphere to match and that is mainly due to the hard work and dedication of a small, fantastic committee who work behind the scenes throughout the year.

We hope you will enjoy and continue to support all the events organised for you by Sandown Carnival Association.

Thank You.

Tammy Vincent

-X-

SANDOWN CARNIVAL COMMITTEE 2010

Life President - Heather Humby
Chairperson - Tammy Vincent
Secretary - Sandy Ringer
Treasurer - Steve Solley

Parades & Publicity - Ben Holbrook Carnival Creations & Grants - Jill Wade-Smith
Queens - Mary Searle & Lesley Shilton
Events Organiser - Mary Searle & Lesley Shilton Website - Martin Harris
Health & Safety - Paddy Mc Hugh Fundraising - Keira Clifford
And
Christine Shilton, Lesley Clifford, Roy Jemson, Lesley Ord, Leanne Brading

PROCESSIONS

The Carnival Committee can accept no responsibility for any accident or injury by any person. Exhibitors, Competitors or Spectators concerned or taking part in any Procession or Carnival Event do so at their own risk.

COLLECTION

Please support the official collectors and give generously. All monies collected are the property of Sandown Carnival Association.

PRODUCTION

The Sandown Carnival Programme was Designed & Printed by Sandown Graphic Press.

CARNIVAL QUEENS 2010



CARNIVAL QUEENS

Pictured Left to right -
Thea Callaghan, Safiah
Sharudin, Tyler Attrill,
Danielle Smith, Yuki Abe
and Phoebe Harverson

Name: Thea Callaghan. **Age:** 10.

School: Christ The King College.

Hobbies/Interest: Singing, Dancing, Acting, Netball & Tennis.

Favourite Bands: Stacy from X-factor, Girls Aloud & The Saturdays.

What I am looking forward to most about being a Carnival Queen: I loved looking at the Queens when I was younger and always wanted to be one, meeting new people & looking at a smiling crowd.

Likes: Gummy bears, The Duck Song on YOUTUBE, lollypops & shopping.

Dislikes: Cheryl Cole, Spiders, Cats, rubber chickens & BOYS!!!!!!

Name: Safiah Sharudin. **Age:** 11.

School: Sandham Middle School.

Hobbies/Interest: Dancing, Shopping & Modelling.

Favourite Bands: Chipmunk, JLS, Beyonce, The Saturdays, N-Dubz, Lady Gaga & Alicia Keys.

What I am looking forward to most about being a Carnival Queen: The dress as the dresses are always fantastic and being on the float.

Likes: Chocolate, Gummy Bears & Ice-Cream.

Dislikes: Brussel sprouts, Spiders, Cats & Justin Bieber.

Name: Tyler Attrill. **Age:** 11.

School: Sandown Middle School.

Hobbies/Interests: Dancing, Ice skating, Singing & Shopping.

Favourite Bands: N-Dubz, The Saturdays, Lady Gaga, Chipmunk & Justin Bieber.

What I am looking forward to most about being a Carnival Queen: The dress, seeing all my mates and having fun as I love carnivals.

Likes: Hanging around with my mates, Ice-cream, Chuppa Chups, Singing & Twilight.

Dislikes: Rubber chickens, Brussel Sprouts & JLS.

Name: Danielle Smith **Age:** 11.

School: Sandham Middle School.

Hobbies/Interest: Dancing, Football, Modelling, Shopping, Ice-Skating & Singing into hairbrushes!!!

Favourite Bands: JLS & Lady Gaga.

What I am looking forward to most about being a Carnival Queen: The dress.

Likes: Doctor Who & Gummy Bears.

Dislikes: Michael Jackson, Justin Bieber, Cats, Cheryl Cole, Spiders, Snakes & Rubber chickens.

Name: Yuki Abe. **Age:** 10.

School: Sandham Middle School.

Hobbies/Interest: Dancing, Shopping, Running, Ice-Skating, Modelling, & Singing.

Favourite Bands: N-Dubz, Lady Gaga, Alicia Keys & Chipmunk.

What I am looking forward to most about being a Carnival Queen: My sister & friends have been on the float and they said it was really good & the dress.

Likes: Chocolate, Ice-cream, Hanging around with friends.

Dislikes: Spiders, Brussel sprouts, Rain, Nightmares, JLS, Flies & Bumble Bees.

Name: Phoebe Harverson. **Age:** 10.

School: Sandham Middle School.

Hobbies/Interest: Ballet Dancing, Playing Football & Talking.

Favourite Bands: Lady Gaga, JLS, The Saturdays & The Feeling.

What I am looking forward to most about being a Carnival Queen: Having fun, being on the float, waving to people & the dress.

Likes: Doctor Who, Gummy Bears & Science.

Dislikes: Brussel Sprouts.

EUROPA

Produced at the Carnival Learning Centre in Spring 2009 as a bespoke commission for the launch of the UK Centre for Carnival Arts in Luton.

The project involved artists, performers and technicians from various Isle of Wight carnival groups working together under the artistic direction of Sharon George and Jill Wade Smith from Island-based Mas Fusion.

Europa tells the story of the mythological birth of Europe based on Greek legend. The god Zeus, disguised as a tame white bull, falls in love and abducts a beautiful Phoenician princess and carries her to Crete to make her the first Queen of Europe. He bestows on her 4 magical gifts - Talos, a winged guardian, drawn from the sun, Laelaps, a dog so fast it could outrun anything, a javelin that never missed and a necklace of stars (destined to become the European flag). All are represented in our mas band.

Zeus the bull, a massive 5 meter high moving structure, was created in Italy by our partners Umberto and Stefano Cinquini from the famous Viareggio Carnival. www.frattellicinquini.com.

In order to portray the European roots of Carnival, Europa was choreographed and presented on stage using traditional characters from pantomime and commedia del arte, using mime, dance and tumbling acrobats.



**Join us at Sandown Main
Carnival for the first
presentation at an Island
Carnival of part of the Europa
project - PREPARE TO BE
AMAZED!!!!!!!**



NOVEMBER CARNIVAL



REMEMBER, REMEMBER ...

SANDOWN CARNIVAL ASSOCIATION

NOVEMBER 5TH

CARNIVAL

AND CELEBRATIONS

**FRIDAY 5TH NOVEMBER 2010
FROM 6.00PM**



FOR FULL DETAILS VISIT
www.sandowncarnival.com





CHILDREN'S PROCESSION

TUESDAY 27TH JULY

SANDHAM GROUNDS

ASSEMBLE – 1.45PM

JUDGING – 2.00PM

MOVE OFF – 2.45PM

PLEASE NOTE:

Judging will now take place before the procession starts with prizes awarded following the parade at Eastern Gardens

CLASSES

UP TO 6 YEARS OF AGE
PAIRS UP TO 10 YEARS OF AGE
7-10 YEARS OF AGE
11-15 YEARS OF AGE
PAIRS 11-15 YEARS OF AGE
HANDCARTS & CYCLES
GROUPS OF ANY AGE
BEST OVERALL

**LED BY THE SANDOWN CARNIVAL QUEENS FLOAT
AND**

GREENMOUNT SAMBA

ROUTE

**CULVER PARADE, HIGH ST, PIER ST AND THE
ESPLANADE TO**

EASTERN GARDENS

**THE PRESENTATION OF PRIZES WILL BE PERFORMED BY
SANDOWN MAYOR JACQUIE MEREWETHER**

ALL CHILDREN IN FANCY DRESS WILL RECEIVE A SMALL PRIZE

GRAND PRIZE DRAW



Sandown Carnival Associations

GRAND PRIZE DRAW

2.00PM

WEDNESDAY 28TH JULY
EASTERN GARDENS

£100.00 - 1ST PRIZE

£50.00 - 2ND PRIZE

£25.00 - 3RD PRIZE

PLUS MANY OTHER LOCALLY DONATED PRIZES
TICKETS AVAILABLE AROUND SANDOWN

INCLUDING FROM OUR FUNDRAISING OUTLET AT
77A HIGH ST, SANDOWN



CAR TREASURE HUNT



CAR TREASURE HUNT

SUNDAY 25TH JULY

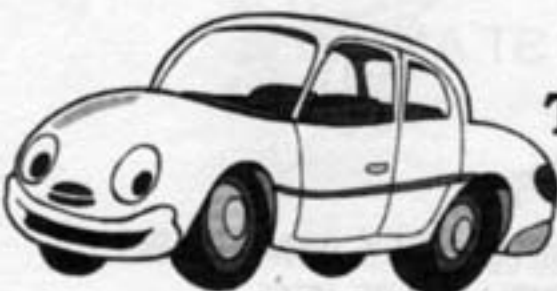
YAVERLAND CAR PARK (OPPOSITE THE ZOO)

6.30PM REGISTRATION

7.00PM START

**TROPHIES & CASH PRIZES TO BE WON
FREE TO ENTER**

FINISHING AT
THE CASTLE INN,
FITZROY ST



BBQ & PRIZE GIVING



GRAND MAIN PROCESSION



GRAND MAIN PROCESSION

WEDNESDAY 28TH JULY
CULVER PARADE

ASSEMBLE - 5.00PM
JUDGING - 6.00PM
MOVE OFF - 7.00PM

FEATURING
"EUROPA" & "MAS FUSION"

CLASSES

A - QUEENS

B - YOUTH ORGANISATIONS & ASSOCIATIONS

C - TRADE

D - INDIVIDUALS

E - CHILDRENS FANCY DRESS

F - ADULT FANCY DRESS

G - FANCY DRESS (GROUPS)

H - HANDCARTS & CYCLES

I - SCHOOL & COMMUNITY GROUPS

ROUTE

**CULVER PARADE, HIGH STREET, BEACHFIELD ROAD, ROYAL CRESCENT,
MELVILLE STREET, FITZROY STREET, STATION AVENUE, ALBERT ROAD,
VICTORIA ROAD, CULVER PARADE.**

THE PERFECT PLACES TO GET A GREAT VIEW OF SANDOWN CARNIVAL

Royal Crescent, Melville Street, Fitzroy Street, Station Avenue, Albert Road, Victoria Road

SAFETY INFORMATION

**PLEASE KEEP OFF THE ROAD AT ALL TIMES DURING THE PROCESSION
AND DO NOT THROW ANY MONEY OR OTHER OBJECTS AT THE PEOPLE IN THE PROCESSION**

visit

WWW.SANDOWNCARNIVAL.COM

for further information & rules on taking part

ALL MONIES COLLECTED ARE THE PROPERTY OF SANDOWN CARNIVAL ASSOCIATION



TRAFFIC & TRAVEL INFORMATION

DRIVERS ARE REMINDED THAT ON CARNIVAL DAYS NO-PARKING CONES WILL BE PLACED AROUND THE TOWN IN VARIOUS LOCATIONS. THESE ARE IN PLACE TO ALLOW THE PROCESSION TO PROCEED UNHINDERED AND FOR CROWD SAFETY.

CONES AND DOUBLE YELLOW LINES WILL BE STRICTLY ENFORCED AND CARS BLOCKING THE CARNIVAL ROUTE MAY BE TOWED AWAY.

TO HELP WITH TRAFFIC CONGESTION ON CARNIVAL DAYS WE STRONGLY ADVISE THE USE OF PUBLIC TRANSPORT TO GET TO AND FROM THE CARNIVAL. SOUTHERN VECTIS & ISLANDLINE WILL BE OPERATING REGULAR SERVICES DURING CARNIVAL TIME TO AND FROM THE TOWN.

HELP US SUPPORT



TOWN PRINCESS COMPETITION



TOWN PRINCESS COMPETITION

**TUESDAY 27TH JULY
12.30PM AT EASTERN GARDENS**

OPEN TO ALL GIRLS AGED 7 - 10 YEARS WHO LIVE OR ARE STAYING IN SANDOWN ARE ELIGIBLE TO ENTER.

THE WINNER WILL RIDE IN THE MAIN PROCESSION AT 7.00PM ON WED EVENING.

ALL ENTRANTS SHOULD WEAR BEACH/PLAY WEAR I.E SHORTS & T-SHIRT - NO SWIMWEAR.

PLEASE FILL IN THE SLIP BELOW AND HAND IT TO CARNIVAL ORGANISERS AT EASTERN GARDENS BY 11.30AM ON TUESDAY 27TH JULY FOR REGISTRATION.

Name: Age

Home Address:

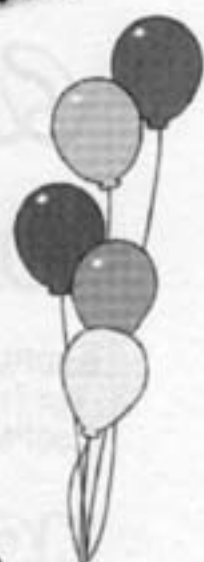
Contact No:

Parent Consent

PRE CARNIVAL STREET PARTY



IN ASSOCIATION WITH
THE CASTLE INN



PRE CARNIVAL ENTERTAINMENT

WEDNESDAY 28TH JULY FROM 6.00PM
FITZROY STREET, SANDOWN



ENTERTAINMENT - MUSIC - FOOD - GAMES

Sewn n So

131 High Street, Ryde, Isle of Wight
Tel: 01983 562303

Dress and Stage Fabrics, Wool, Haberdashery
Are thrilled to support the tradition of
Sandown Carnival Queens.

Sponsors Of Sandown's Queens Dresses
www.sewnsofabrics.com



CARNIVAL PROGRAMME

SUNDAY 25TH JULY

- 6.30PM – **CAR TREASURE HUNT REGISTRATION** – YAVERLAND CAR PARK (OPPOSITE THE ZOO).
7.00PM – **CAR TREASURE HUNT STARTS** – YAVERLAND CAR PARK (OPPOSITE ZOO).

MONDAY 26TH JULY

- 2.00PM – **MASQUERADE MONDAY** – EASTERN GARDENS.
EVERY MONDAY THROUGHOUT THE SCHOOL HOLIDAYS - 2PM – 4PM
BIG LOTTERY FUNDED.



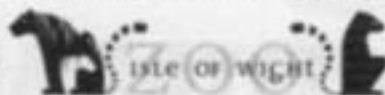
Supported by
The National Lottery[®]
through the Big Lottery Fund



TUESDAY 27TH JULY

- 9.00 AM – **REGISTER FOR SANDCASTLE COMPETITION** – EASTERN GARDENS.
9.00AM – 12NOON – **CHILDREN'S ART COMPETITION** – EASTERN GARDENS.

SPONSORED BY THE ISLE OF WIGHT ZOO.



- 9.30AM – **SANDCASTLE COMPETITION STARTS** – ON THE BEACH - EASTERN GARDENS.
10.00AM – **ENTERTAINMENT WITH 'PETE CHURCH'** – ALL ROUND FAMILY ENTERTAINER – EASTERN GARDENS.
10.30 AM – **JUDGING OF SANDCASTLE COMPETITION** – EASTERN GARDENS.
10.45 AM – **PRESENTATION OF PRIZES FOR SANDCASTLE COMPETITION** – EASTERN GARDENS.
11.30PM – **REGISTRATION FOR TOWN PRINCESS COMPITITION CLOSES** – EASTERN GARDENS.
12.30PM – **TOWN PRINCESS COMPITITION** – EASTERN GARDENS.
1.45PM – **CHILDREN'S PROCESSION ASSEMBLES** – SANDHAM GROUNDS.
2.00PM – **MUSIC WITH 'GREENMOUNT SAMBA'** – SANDHAM GROUNDS.
2.00PM – **JUDGING OF CHILDREN'S PROCESSION STARTS** – SANDHAM GROUNDS.
2.45PM – **CHILDREN'S PROCESSION MOVES OFF** – FROM SANDHAM GROUNDS AROUND THE TOWN, LED BY THE SANDOWN CARNIVAL QUEENS FLOAT & GREENMOUNT SAMBA.
3.30PM – **PRESENTATION OF PRIZES FOR CHILDREN'S PROCESSION** – EASTERN GARDENS.

CARNIVAL PROGRAMME



WEDNESDAY 28TH JULY

- 10.00AM – CIRCUS WORKSHOP WITH 'RYDE EXTREME PERFORMERS' – EASTERN GARDENS.
- 11.00PM – ISLE OF HULA – EASTERN GARDENS.
- 12.30PM – LIVE MUSIC WITH 'DAVE GRAHAM' GUITARIST & SINGER – EASTERN GARDENS.
- 1.00PM – FACE PAINTING – EASTERN GARDENS.
- 2.00PM – GRAND PRIZE DRAW – EASTERN GARDENS.
- 6.00PM – PRE CARNIVAL ENTERTAINMENT – FITZROY STREET
- 5.00PM – CARNIVAL STARTS TO ASSEMBLE – CULVER PARADE
- 6.00PM – JUDGING OF ENTRIES STARTS – CULVER PARADE
- 7.00PM – CARNIVAL MOVES OFF – FROM CULVER PARADE AROUND THE TOWN

SUNDAY 1ST AUGUST

- 8.00PM – CARNIVAL QUIZ NIGHT - £50 1ST PRIZE, £35 2ND PRIZE, £20 3RD PRIZE – PLUS IRISH BINGO AND SNOWBALL – THE CASTLE INN, FITZROY ST, SANDOWN.

WEDNESDAY 25TH AUGUST

ILLUMINATED CARNIVAL

'FEATURING'

**HUNDREDS OF AMAZING
COSTUMES & FLOATS**

LIT WITH THOUSANDS OF COLOURFUL LIGHTS

- 7.00PM – ILLUMINATED CARNIVAL STARTS TO ASSEMBLE – CULVER PARADE.
- 8.00PM – JUDGING OF ENTRIES STARTS – CULVER PARADE.
- 9.00PM – ILLUMINATED CARNIVAL MOVES OFF – FROM CULVER PARADE AROUND THE TOWN.

The Castle Inn

12 - 14 Fitzroy Street

Sandown

Tel: 01983 403169

www.thecastleinnsandown.co.uk



**A traditional pub with a strong community spirit
and brilliant atmosphere**

Popular with locals and visitors alike

Great monthly theme nights
with our resident "DJ CARL"



Big meat draw every Friday
with B.J's meats

Large sheltered, heated smoking areas
in a beautiful courtyard garden

Family room with pool table

Burger van

Friday and Saturday nights

Happy Hours 5 - 7pm daily

Sunday Evening quiz
with guaranteed prizes

cribbage teams

New members most welcome

17

WIGHT FIRE Co.

EXTINGUISHERS, SALES & SERVICE

- Fire Alarms
- Blankets
- Signs
- Emergency Lighting
- Fire Risk Assessments



*To guarantee
a professional service*

Telephone

• 01983 407155

• (After Hours) 405467

Fax

• 408167

Email

sales@wightfire.co.uk



www.wightfire.co.uk

Unit 16 Faulkner Lane, Sandown, I.O.W. PO36 9AZ



20

A & M.A. ROBINSON SEAVIEW SERVICES

A Family Run Business

Established in 1918

Island, Mainland and Continental
Coach Tour Operators
Special Rates for Parties

small enough to care, big enough to cope

Sandown: (01983) 407070

Evenings: (01983) 613100

Fax: (01983) 407045

Email: seaview_tu@iname.com

Website: www.seaview.services.t12.com



**24hr
BREAKDOWN
SERVICE**

**COACH WASHING
FACILITIES**

21



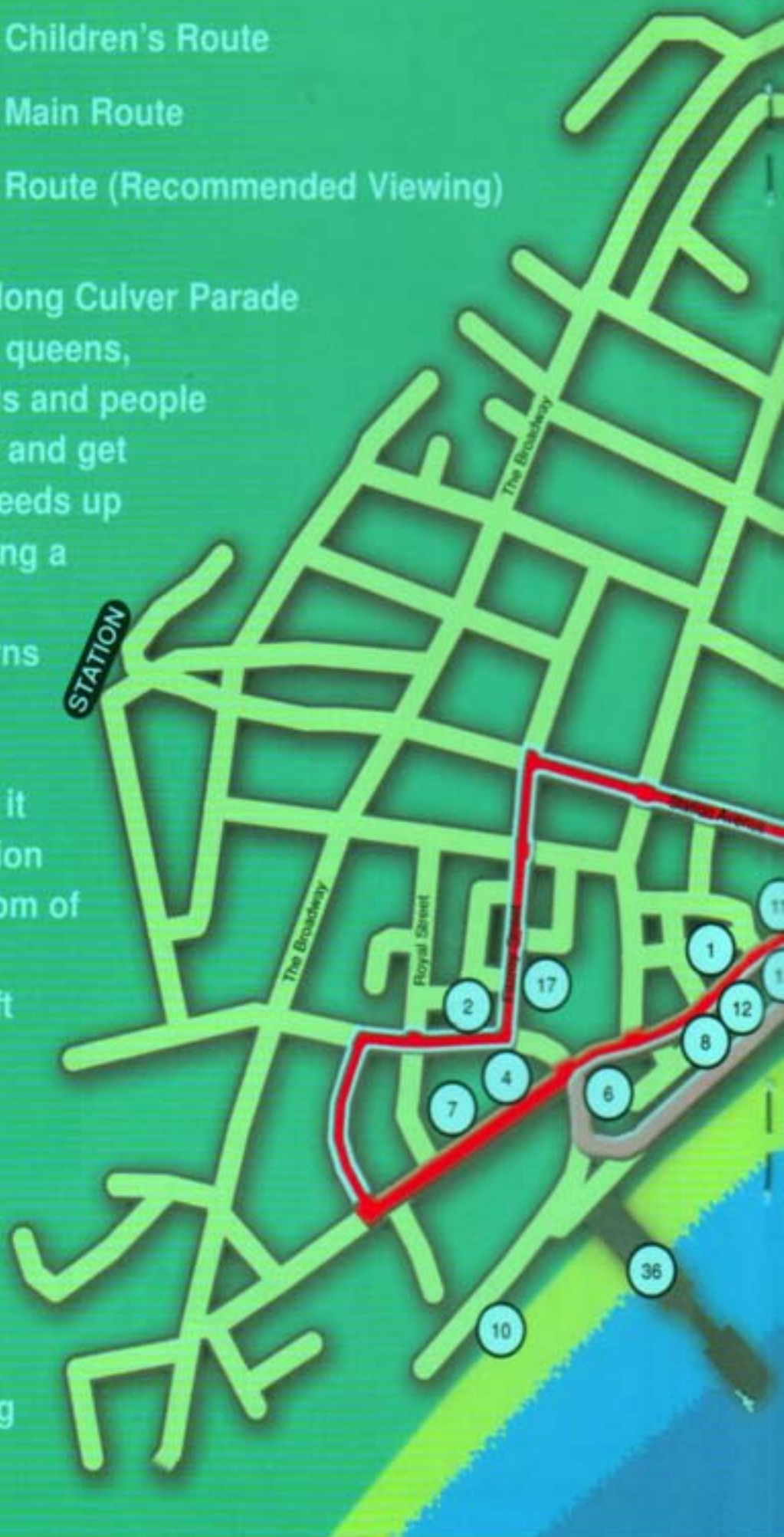
The Ocean Deck Inn

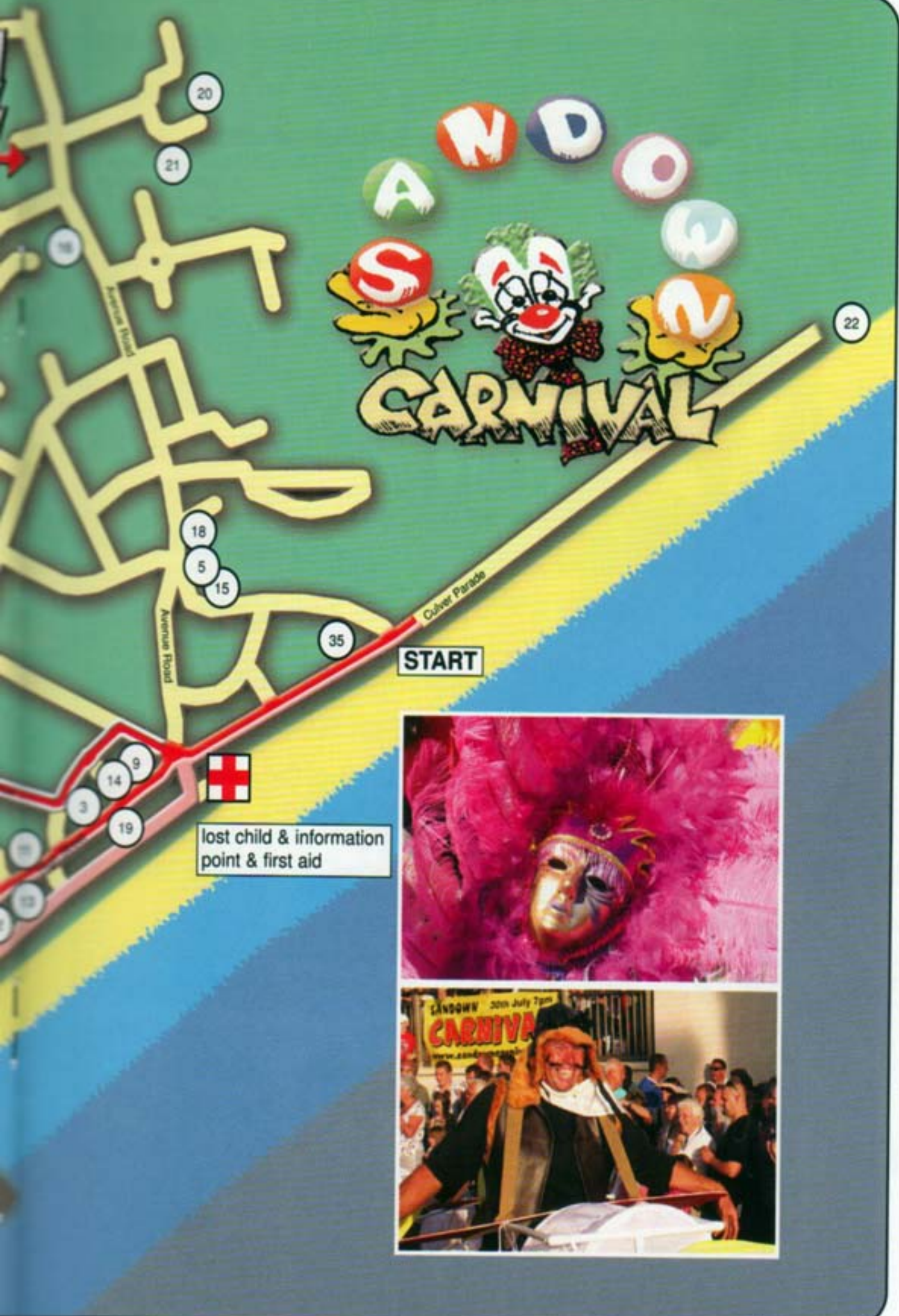
Sandown Esplanade 01983 403960

THE ROUTE

-  Children's Route
-  Main Route
-  Route (Recommended Viewing)

The route sets off along Culver Parade where all the floats, queens, organisations, bands and people in fancy dress meet and get judged. It then proceeds up the High Street, taking a right into Royal Crescent. It then turns right into Melville Street, then left into Fitzroy Street. Then it turns right into Station Avenue. At the bottom of Station Avenue the procession turns left into Albert Street. Finally it takes the 2nd right into Victoria Road then over the small roundabout and ends up in Culver Parade facing the other way.





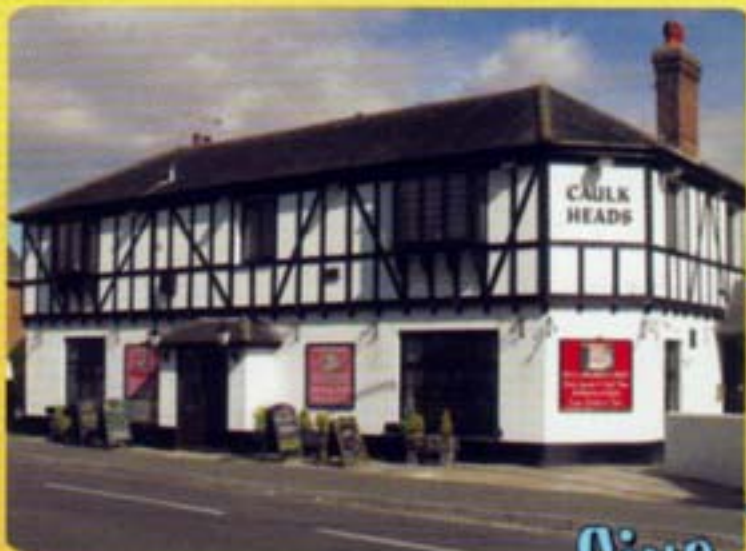
START

lost child & information point & first aid



THE CAULKHEADS

42 Avenue Road, Sandown



Family Dining Pub

Live Entertainment Fridays

- Garden Arcade - Great Food Served All Day -
- Large Car Parks - Disabled Loo -
- Additional Adult Only Dining Area -
- Large Selection of Beers & Wines -
- Separate Childrens Menu -

Indoor Ball Pit and HMS Caulkheads Play Area

Telephone
(01983) 403878



WHY NOT JOIN IN WITH THE FUN ???



AS SANDOWN CARNIVAL GETS BIGGER & BIGGER SO DOES THE AMOUNT OF FUN YOU COULD HAVE TAKING PART!! IT'S NEVER BEEN EASIER TO TAKE PART; THERE IS NO NEED FOR ENTRY FORMS, JUST TURN UP IN TIME FOR JUDGING. IF YOU BELONG TO AN ORGANISATION, OWN A BUSINESS OR JUST A GROUP OF FRIENDS OR FAMILY; WHY NOT JOIN IN THE CARNIVAL FUN. YOU DON'T HAVE TO HAVE A LARGE FLOAT YOU CAN JOIN IN ON FOOT, WITH A SMALL TRAILER, A HAND CART OR ON THE BACK OF A TRUCK, ITS EASY!!!!

IF YOU ARRIVE IN TIME FOR JUDGING YOU COULD EVEN WIN A PRIZE OR GET YOUR ENTRY IN THE NEWSPAPER OR EVEN ON T.V.

IF YOU THINK IT'S TOO LATE THEN YOUR WRONG!! YOU CAN BUILD A FLOAT IN JUST A DAY OR TWO, SO WHY WAIT?

START YOUR ENTRY TODAY AND BE PART OF THE BEST CARNIVAL ATMOSPHERE ON THE ISLAND, NOT JUST A SPECTATOR.

AND DON'T FORGET THERE IS ALWAYS THE
ILLUMINATED CARNIVAL

ON WEDNESDAY 25TH AUGUST AT 9.00PM Or
NOVEMBER 5TH CARNIVAL & CELEBRATIONS

FOR MORE INFORMATION ON HOW TO TAKE PART, BUILD A FLOAT AND SAFETY ADVICE VISIT
www.sandowncarnival.com

SANDCASTLE COMPETITION



CARNIVAL SANDCASTLE COMPETITION

TUESDAY 27TH JULY ON THE BEACH AT EASTERN GARDENS



9.00AM REGISTRATION
9.30AM COMPETITION STARTS
10.30AM JUDGING
10.45AM PRIZE GIVING



PRIZES WILL BE AWARDED TO SIX GROUPS:

UNDER 5 YEARS (SINGLE)

UNDER 5 YEARS (2 OR MORE)

6 TO 9 YEARS (SINGLE)

6 TO 9 YEARS (2 OR MORE)

10 TO 13 YEARS (SINGLE)

10 TO 13 YEARS (2 OR MORE)

ALL ENTRANTS WILL RECEIVE A SMALL GIFT

Sandown
graphics

General
Printers

TellFax: **01983 407577**

Email: graphicpress.sandown@btinternet.com

SUPPLIERS OF . . .

**Personalised Clothing | Business Cards | Signs | Letterheads |
Invoice Sets | Raffle Tickets | Leaflets | Colour Photocopies | Websites
Full Colour Printing AND MUCH MUCH MORE**

15



MOREYS

FOR A WARM FRIENDLY WELCOME COME TO MOREYS

**YOUR LOCAL BUILDERS MERCHANTS
FOR ALL YOUR BUILDING REQUIREMENTS**

**FREE ADVICE & QUOTATIONS
ON YOUR PROJECT
LARGE OR SMALL**



TELEPHONE: 01983 402282

AVENUE ROAD, SANDOWN, ISLE OF WIGHT PO36 8DY

16

Present Times

Large selection of cards,
gifts and photo frames

McFarlane Collectables
& Carte Blanche soft toys

LOADS MORE THAN
WE CAN MENTION!!!

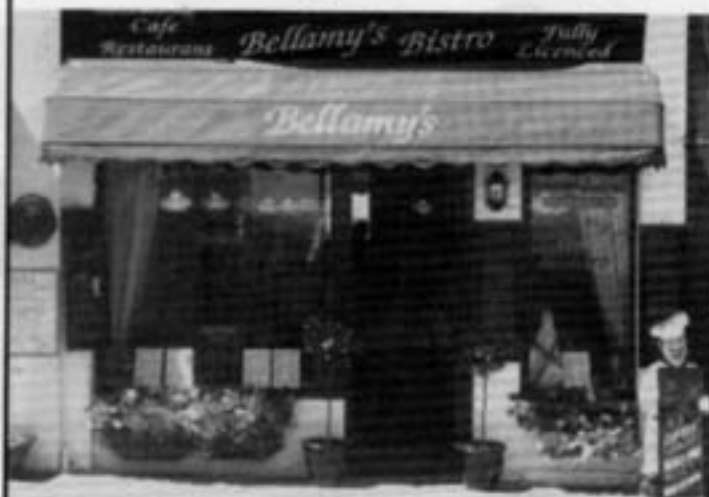
Tel: (01983) 402838

38A High Street, Sandown

13

Bellamy's Bistro

We welcome you for
Classic Retro British
& European Food



71 High Street, Sandown, Isle of Wight PO36 8AD

TELEPHONE 403288

11

Ladbrokes

NUMBER 1
BOOKMAKERS
ON THE ISLAND

NEWLY REFITTED SHOP
IN SANDOWN

A black and white photograph of the exterior of a Ladbrokes bookmaker shop. The shop has a dark awning with the "Ladbrokes" logo. There are three windows and a central entrance. The windows have signs that say "FREE".

Ladbrokes

Come in and play our
great CASHQUEST Games

1

TOYMASTER

HORNBY & SCALEXTRIC SALES & SERVICE AGENTS

GAMES & TOYS

JIGSAWS

CRAFT SETS

ELECTRONIC GAMES

MODELS

BRITAINS FARMS & SOLDIERS

SWINGS & SLIDES



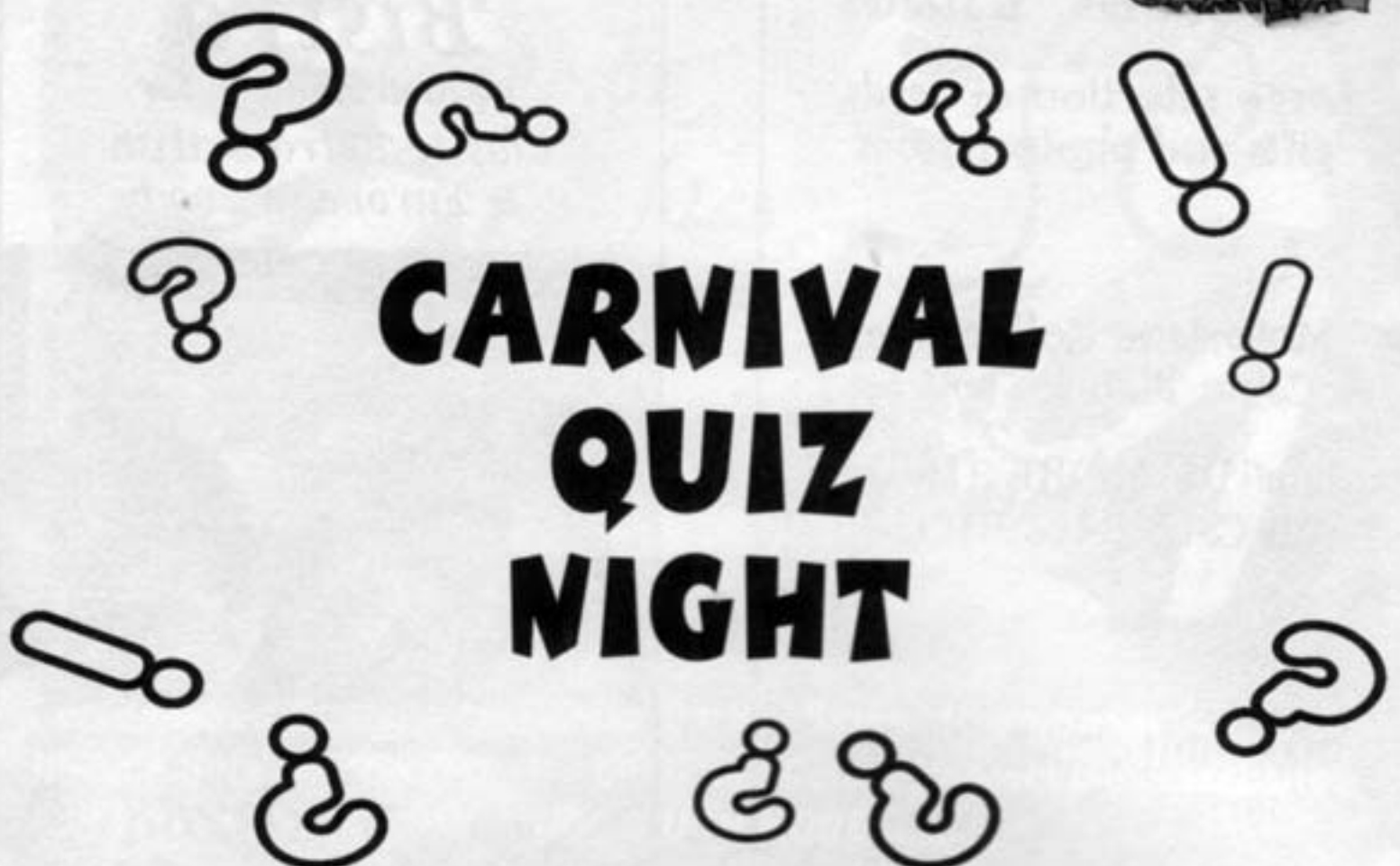
9 UNION STREET - RYDE
563836

103 HIGH STREET - SANDOWN
404182

69-71 REGENT STREET - SHANKLIN
866824

14

QUIZ NIGHT



**CARNIVAL
QUIZ
NIGHT**

SUNDAY 1ST AUGUST

**THE CASTLE INN
FITZROY ST, SANDOWN**

**8.30PM START
ENTRY £2 PER PERSON**

**£50 FIRST PRIZE
£35 SECOND PRIZE
£20 THIRD PRIZE**

KINDLY DONATED BY THE CASTLE INN

ALL PROCEEDS GO TOWARDS CARNIVAL FUNDS

WESTSIDE[®]

BEACH KIOSK

(RIGHT OF THE PIER)

**FOR ALL YOUR SNACK
& BEACH REQUIREMENTS**

**HOT & COLD FOOD
DRINKS & ICE CREAM**

DECKCHAIRS

SUNLOUNGERS

BEACH GOODS



10

Kates Cottage

Steaks

Roast
Dinners



Snacks

Cream
Teas

69 High Street,
Sandown, Isle of Wight

Telephone
(01983) 405449

11

Enjoy the atmosphere of the Kings House any time of day
for drinks, snacks or lunch

A contemporary decor with comfy sofas and Lloyd Loom chairs
The sun balcony provides panoramic views across the bay



Bar Café

High Street, Sandown



12

FLANAGANS

Restaurant & Bar



GREAT FOOD served 12 - 9
OUTSIDE TERRACE with sea view
STEAK NIGHT every Friday
REAL ALE
ESPN & SKY SPORTS
LIVE ENTERTAINMENT every weekend
FREE WI-FI
FAMILIES & PETS WELCOME
7 Pier Street, Sandown 01983 408851
www.flanagansiow.com

6

THE ROXY

BAR & GRILL

TELEPHONE
(01983) 401551



17 Beachfield Road (High Street),
Sandown, Isle of Wight

7

BAGS *of Sandown*

28 HIGH STREET,
SANDOWN, ISLE OF WIGHT

Large Range
of Leathers

TELEPHONE
(01983) 408666

Island Girl

8

CHICKEN & PIZZA LAND

111 HIGH STREET, SANDOWN

OPEN 7 DAYS A WEEK
11.30AM TIL LATE



KEBABS
-
BURGERS
-
CHICKEN
-
PIZZAS

FREE
BOTTLE OF SOFT
DRINK WHEN
YOU SPEND
£20 & OVER

9

TREASURE HUNT



Start at the most informed place in Sandown, this animal is lying down careful how you cross over it. Turn left and immediately right, pass the place that might have a square garden and cross over to the most aptly named Hotel in Sandown. Continue on up the hill, cross over with the Continental place of law on your right, you might think this company is located in the middle of the Country. says 2 but in fact there are 4, what are they?, at the top of the hill cross over the stripes turn left and immediately right, in the direction of the perfect place to take to the water, continue past coastal breeze..... turn right up the street where everyone is feeling ill crossover the street that isn't flat, and past the place that might give you the pip..... What 30 others are missing? crossover the road into the yard, have a good look around and answer the following questions / clues:

- (i) Why wouldn't you find Wayne or David here?
- (ii) Why might Liza have been here a few times?
- (iii) What is the PO number?
- (iv) Who would answer if you rang 08457 484950?
- (v) What zone number is litter?
- (vi) Who resides at 40 Melton Street?
- (vii) What does 'g' mean?
- (viii) How many stations can you reach from platform 1?

Go out of the yard and Follow the arrow in the road and go where 20 is plenty.

Make sure you pass this place 2 by 2 anchor here before going ashore Turn left, past the Lunar rock cross over opposite yellow zig zags, carry on in same direction take next right turn and pass the main entrance, What is the S/S number, Cross opposite where you think Henry V111 might have become a sign writer, then take the striped route and carry on in the same direction, past Stamford Bridge's building turn left, cross over opposite the palms and continue in the same direction, turn right, here a bird of prey is a good investment..... turn right, crossover be a devil and go in the wrong direction. Who owns the grey box?, if you own a Vespa why shouldn't you come here? cross over, how much further is it to travel to Newport than to Ryde?, how many miles is it to the coloured sands? Where would the B3395 take you? turn right past the reading room. Why can't Island Women shop here, what makes you think Barbie might eat here?, cross over Victoria's other half's road past where the TV botanist eats..... NOW might be a good time to cross the road! - Who is celebrating 40 years of trading?, how much would you have to pay to have your sandwich toasted?, would Camilla ring this number continue on and hand in your answers at a place you should remember from the beginning

Name:

Address:

Tel. No:

Entries must be handed in by 12 noon on Wednesday 28th July (Carnival Day)



AVENUE ROAD CHIPPY

Fish

V Poached Fish	£3.50
Skinless Cod	£3.60
Skinless Haddock	£3.95
Yorkshire Fish Cake	£1.60
Breaded Fish Cake	£1.30
Fish Bites only	£1.80
Fish Bites and Chips	£2.60
Cod Roe	£1.25
Scampi (10)	£3.75

Chips

Regular Chips	£1.35
Large Chip	£1.95
Kids Cone	£0.80
Chips n Peas, or Beans, or Gravy or Curry or Cheese or Egg(2)	£2.20

Burgers & Buttys

Chip Butty	£1.75
Bacon Butty	£2.10
Sausage Butty	£2.10
Egg Butty	£1.00
Chicken Burger (Lettuce/Mayo)	£2.75
Beefburger / Onions	£2.75
Cheeseburger / Onions	£2.85
Bacon Burger	£2.90

Pies etc

Pukka Steak Pie,	£2.00
Pukka Steak & Kidney	£2.00
Pukka Beef & Onion,	£2.00
Pukka Chicken & Mushroom	£2.00
Cornish Pastie	£2.00
Cheese & Onion Pastie	£1.85

Drinks

Cans	£1.00
Bottles	£0.50
Tea	£1.00
Coffee	£1.20

Opening Times

Monday & Tuesday

5 - 7

Wednesday

12 - 2 5 - 8

Thursday

5 - 8

Friday & Saturday

12 - 2 5 - 9

V Jacket Potato plain	£2.60
Cheese/beans	£3.00
Jumbo Sausage	£1.20
Battered Jumbo	£1.30
Sausage	£0.80
Battered Sausage	£0.90
Saveloy	£1.20
Potato Scollops x 4	£0.80
Spam Fritter	£1.55
Chicken Nuggets (6)	£2.60
Chicken Strips	£3.00
Chicken Breast 1/4	£3.50
Gravy	£0.90
V Baked Beans	£0.90
V Mushy Peas	£0.90
V Curry Sauce	£1.10
V Pickled Egg	£0.50
V Pickled Onion	£0.50
V Gherkin	£0.50
V Buttered Roll	£0.50
Sauce sachet	£0.10
HP/Tomato, Mayo, Tartar.	

Veggi

Onion Rings (10)	£2.20
Spring Rolls	£1.85
Veggi Sausage	£0.90
Battered Veggi Sausage	£0.95
Veggi Burger/Salad	£2.50
Chilli Bean Burger/Salad	£2.75
Battered Mushrooms (5),	£0.90
Pea Fritters	£0.75
Chilli Sauce (portion)	£0.20

Phone Orders Tel 401147

WINDOW SPOTTING COMPETITION



From Monday 19th July the windows of the shops listed there will be displaying a smiley face. Somewhere in that window will be an odd item - an item that they do not actually sell. Simply write the name of the object in the spaces below. Take your completed form to the Sandown Tourist Information Centre by 12 noon on July 28th, Carnival day, and the first three correct entries drawn will receive a prize.

- | | |
|-----------------------------|-------------------------------|
| Island Girl | Bargain Shoes |
| PJ News | Wight Discount |
| Salon 109 | Tourist Info Office |
| Toymaster | Sandown News |
| Ladies Realm | Memory Lane |
| Baileys | Puddle Duck |
| Sandown Bay Gifts | Kates Cottage |
| Bellamy's | Geoff's |
| Trevellion | Sandown Carnival Outlet |
| Wight Office Supplies | Fusion |
| Bags of Sandown | Old World Antiques |
| Present Times | The Rock Shop |
| Creekwood Gifts | Kaleidoscope |
| Fields Menswear | Upstairs Downstairs |
| Harmony DIY | Garden Gems |
| In Step | Madison's |
| Bygone Days | Bed, Body & Beach |
| Rachelles | Curiosity |
| Charles | Camille's |

Name:

Address:

.....

Contact No:

WINDOW SPOTTERS

PLEASE DO NOT WORRY SHOPKEEPERS FOR THEIR ASSISTANCE

Please support those businesses, which have helped to make this competition possible.



MAS FUSION

- FLIGHTS OF FANCY

This year MAS FUSION the Islands biggest community carnival band will be showcasing their costumes entitled 'Flights of Fancy'. Inspiration for the costumes this year has come from researching the birds, insects and the environment of the rain forest.

The 80 strong group will be performing at both Sandown carnivals to some familiar sound tracks in vibrant and colourful costumes representing the colours of the rain forest.

Be prepared to be dazzled!

MAS FUSION is a voluntary group which encourages participation from people young and old from the across the Island, the group relies solely on the generosity of donations, fund raising events and the donations the performers make themselves. We would once again like to thank Sandown Carnival Association for the support and financial contribution which ensures that we are able to attend their events, the many volunteers who have helped make the costumes and to our members who continue to dedicate their time and give 100% commitment throughout the year to ensuring that MAS FUSION can once again put together a SPECTACULAR showcase. We look forward to seeing you at the carnivals and don't forget to clap and cheer as we pass you by.

For more information take a look at www.masfusion.co.uk

BIG LOTTERY



THE BIG LOTTERY FUND

Thanks to funding from the Big Lottery Sandown Carnival Association has been able to provide opportunities for the Young People of the Island to get involved in Carnival and other events.

Other workshops funded through the lottery project have included performance and dance. The purchase of the Islands first Eco sound systems has supported lots of schools and community groups by providing them with sound to perform to at the carnival.

This year the big lottery has supported young people to access a range of creative arts and carnival projects. Schools and community groups supported through the project will participate in this year's carnivals and at other events across the Island including the Isle of Wight Festival and Global rock. Young people who participated in costume design workshops will be performing in their costumes at Sandown carnival showing off and celebrating their achievements.

Masquerade Mondays will also continue every Monday this summer at Eastern Gardens from 2pm - 4pm. The event allows young people to show off skills that they have learnt at other lottery funded projects.



Supported by

The National Lottery

through the Big Lottery Fund



CARNIVAL DEVELOPMENT FUND



After it's success last year Sandown Carnival Association is continuing it's drive to encourage people to take part and enhance Sandown's Carnival Parades whilst developing participant's carnival arts. The Carnival Development Fund is open to non-profit making organizations, schools, clubs, associations or even a group of friends that are interested in taking part in at least two of Sandown's carnival parades. The fund is designed to help these groups take part, with help buying materials, hiring equipment, travel costs etc.

Sandown Carnival Association is pleased to support the following groups in 2010:

Wight Strollers whose theme last year was Young At Heart. You will remember this group of 30+ for their zimmerframe act in 2009 and their amazing Flying Fockers routine in 2008! This year's theme is being kept under tight wraps - they've not even told us what they're planning! Whatever they do come up with, you know it's going to be hilarious!!

The Wight Diamonds who's entry will be celebrating their 10th anniversary. Last year we saw their fabulous Magic Roundabout float and previously the Flintstones.

Sandown's Finest are working on a "Lost in the Jungle" theme - previously you'll have seen them as Nags & Hags and Freerange Cluckers. This year there's sure to be a lot of monkey business!

The Floor Fillers, previously Gatten & Lake Primary they performed "Happy Feet" last year which was oh-so-cute and this year the group of 25 + youngsters (and the not so young) will be dressed as skeletons in their theme "Dem Bones"!

St John's Primary are theming this year's entry "Our Solar System". Last year it was "British Wildlife" and previously Venetian Masks.



FUNDRAISING OUTLET

AT

**77A HIGH ST
SANDOWN**

QUALITY USED

- * BOOKS * TOYS * CLOTHES *
- * HOUSEHOLD GOODS *
- * BRIC-A-BRAC *

THANKYOU



SANDOWN CARNIVAL SAYS THANKYOU !!!!!

It can cost up to £30,000 to put on Sandown Carnival events.

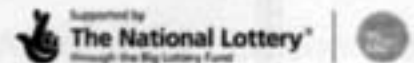
Sandown Carnival is not organised the local authority and relies on the support it gets from trade & businesses and the people of Sandown. It is not cheap to organise a Carnival with Advertising, Insurance's, Bands, First-Aid, Licences, Entertainment and of course our Carnival float and queens dresses to pay for.

Please help us to make sure we can continue to organise a carnival to be proud of in years to come by giving generously to our collectors.

Everyone involved in organising Sandown Carnival gives his or her time on a voluntary basis, from the carnival committee too those people who take the time to make amazing costumes and floats to enter the processions, and we say THANKYOU. We welcome anyone who would like to help in any way & anyone with suggestions as to how we could improve Sandown Carnival.

We say a special thanks to Stuart Dyer who has given his time to build our spectacular Watermill float. We would also like to say a big thankyou to all those who have manned both the former 'Carnival Shop' in Melville Street and now the New Fundraising Outlet on The High Street.

We would also like to thank all those local traders and other Island businesses, listed below, which have made donations to the Carnival & generously supported us in a variety of ways. Sandown Carnival Association and representatives would like to thank The Big Lottery Fund for there generous support to carnival based courses.



THANKYOU!!!!!!!

*Sandown Carnival Association would like to thank
the following organisations and businesses for their generous support*

All Of The Entrants In Sandown
Carnival.

Any Sandown Businesses That
Have Helped In Any Way.

Sandown Town Council.

All Stewards And Other
Volunteers Who Have Helped
With The Carnival.

The Carnival Learning Centre.
All Our Judges.

Ryde High School.
Sandown & Shanklin Lions.
Wayne Peak.

Chris Colwill.
John Davies.
Mark Page.

Dave Ord.
John Reynolds.

Brian Grimes.
Mike Collins.
Mark Williams.
Sharron George.

Stuart Dyer.
Helen & Mike Spencer.

Sue Jackson.
Sandown Graphic Press.
A & G Hookey.
Glory Art Glass.
The Castle Inn
SEW n SO Fabrics.
The Isle Of Wight Zoo.
Isle Of Wight Radio.
Colonel Bogeys.
Camille.
Sandown Jewellers.
Moreys - Sandown.

NUMBER ONE IN ENTERTAINMENT

WIGHT CITY

CULVER PARADE • SANDOWN • 01983 403658

COLONEL

BOGEYS NIGHTCLUB

*the best nightclub
on the Island
for all events,
fun and theme nights*



01983 405320

www.bogeys.co.uk
admin@bogeys.co.uk



Fun Pub - Superb views
home cooked food available
Mon - Thurs 10.30am - 1am
Fri & Sat 10.30am - 2am
Sunday 12pm - 12.30am



open daily 'til late
01983 406622

ARCADE



All the latest in
Video Games,
Fruit Machines,
Casino,
plus 10 Pin Bowling

WIGHT CITY HOLIDAY FLATS

Modern self catering flats, colour TV in all rooms
Spectacular views, all linen & towels provided

Open all year

01983 405686

35



The Isle of Wight Zoo
is pleased to support
carnivals in Sandown

Yaverland Seafront, Sandown, PO36 8QB
isleofwightzoo.com

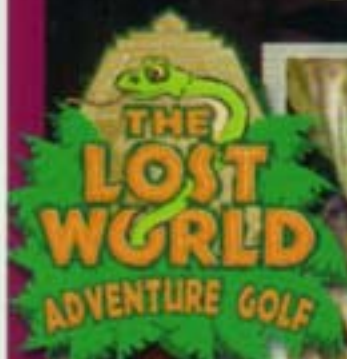
22

SANDOWN PIER

Tel: 01983 404122

a whole day's fun in one!

GREAT ALL WEATHER FAMILY FUN - OPEN ALL YEAR



Crazy Golf like you have never experienced before ... we dare you to enter the Aztec ruins!



Licensed Bar with Pool Shack
superb views across Sandown Bay
01983 404354



Real 10 Pin Bowling
located by the Ancient Aztec Temple
... great for all ages!



A land of Fantasy & Fun
Children's adventure play area
Birthdays & Parties a speciality call 01983 401754

AND IF ALL THAT IS NOT ENOUGH TRY

- The Dodgems • Snake Slide • Childrens Rides
- Plus all the latest in Amusement Machines

www.sandown-pier.com