

SANDOWN CARNIVAL

PROGRAMME OF EVENTS 2017



FREE COPY - Donations Appreciated

Find out more at
sandowncarnival.com



Welcome to Sandown Carnival 2017!

I'd like to welcome both residents and visitors to Sandown Carnival 2017.

Over the past twelve months the carnival committee has been working tirelessly to organize a fun packed calendar of events that we hope you will all take part in and enjoy.

Our Carnival week starts with brainteasers at the ever-popular Quiz Night hosted by our loyal supporters at The Castle Inn. Later we will bring you our Car Treasure Hunt that is sure to test family and friends alike as they travel the route answering the clues as they go!

At the end of the week it's parade time with Children's day, which includes lots of fun for all the kids and our Children's Carnival. The following day is packed with entertainment including firm favourite Derek Sandy, Morris Dancing and lots more, culminating in the Main Carnival parade starting at 7pm.

For those that are visiting Sandown later in the year we will bring you the spectacular Illuminated Carnival at the end of August and our November Celebrations on Saturday 5th November.

Having been involved with Sandown Carnival for over 20 years I have seen things change a lot in that time.

The one thing that never changes is the amount of hard work and dedication that is put in by a small group of volunteers to put on all these events for both locals and visitors. Whether it be on the Carnival Committee or working in our fundraising outlet, I would personally like to thank all those volunteers, both past and present that have kept Sandown Carnival going for over 127 years.



Meet The Team!



CHAIRPERSON & Parades
Ben

VICE CHAIRPERSON
Margaret

TREASURER
Tammy



SECRETARY & Queens Co-ordinator
Hayley



LIFE PRESIDENT
Heather Humby MBE



PUBLICITY & Website
Martin



QUEENS CO-ORDINATOR
Linda

QUEENS CO-ORDINATOR
Debbie



FUNDRAISING inc. SHOP
Sue, Karen, Carole and a whole
bunch of lovely volunteers
who give up their time to raise vital
funds



FLOAT & MAINTENANCE
Stuart Dyer,
Chris Holbrook,
Roy Jemson,
Martin Styles



I hope that all those that have enjoyed and taken part in Sandown Carnival events in the past and want to ensure its future, step forward to help wherever possible and help the Carnival last for many years to come.

Please enjoy all the events that Sandown Carnival has organised this year. Your support through donations to our collectors at our events is always very welcome and appreciated.

Ben Holbrook

Keep In Touch!



Visit our website
www.sandowncarnival.com



Drop us a line
friends@sandowncarnival.com



Find us on Facebook
Search "Sandown Carnival"



Follow us on Twitter
[@sandowncarnival](https://twitter.com/sandowncarnival)



See our photo archive on Flickr
Search "Sandown Carnival"

Could YOU Help?

If you would like to help Sandown Carnival in any way please drop us an email introduction for more details!

friends@sandowncarnival.com



CONTENTS

Competitions & Activities

- 9 **Window Spotting**
Prizes to be won in this popular contest!
- 11 **Treasure Hunt**
Solve the clues and you could win!
- 12 **Carnival Princess Competition**
Ride in the anniversary parade!
- 13 **Car Treasure Hunt**
A firm family favourite! Thu 27th July
- 13 **Carnival Quiz Night**
Sun 23rd July @ The Castle

Children's Day - Fri 28th July

- 14-15 **Entertainment and Parade Details**
Timings and locations

Main Carnival - Sat 29th July

- 16-17 **Route Map**
The main parade map in full
- 20-21 **Entertainment and Parade Details**
Everything you need to know
- 23 **Travel Advice**
Tips and information for visitors



Car Treasure Hunt



Children's Day



Children's Day



2017's Carnival Queens

Illuminated Carnival - Wed 30th Aug

- 26 **Family Beach Sports**
Pre-parade family beach fun!
- 27 **Parade Details**
Times, locations, everything you need

November Celebrations

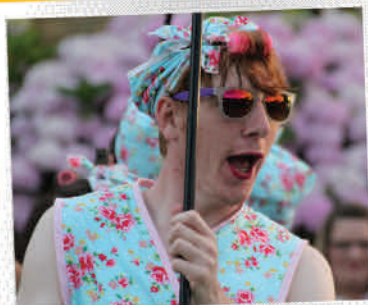
- 30 **Saturday 4th November**
Fun after dark down on the beach!

See Also...

- 25 **Sandown Regatta**
Details for this popular beach event
- 28 **Carnival Development Fund**
Find out who this year's grant winners are
- 29 **Carnival Outlet Shop**
Providing essential funding
- 31 **Our Thanks**
Acknowledging our supporters



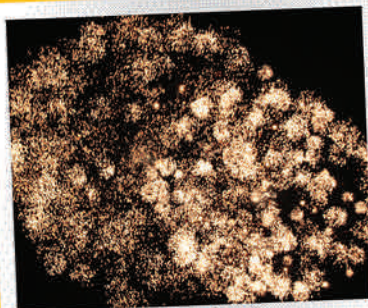
Main Carnival



Main Carnival



Illuminated Carnival



November 5th Celebrations

THE CASTLE INN

FITZROY STREET, SANDOWN

ISLE OF WIGHT PO368HY

01983403169

www.sandowncastle.co.uk

A traditional pub, well known for it's
real ales and community spirit;
popular with locals and visitors alike!



**beta
pak**
LTD.



Island Tea & Coffee Co.

...BECAUSE TIME IS MONEY

JUST ONE CALL, ONE DELIVERY, ONE INVOICE ...

- STATIONERY
- PAPER
- CLEANING AND JANITORIAL
- PACKAGING
- OFFICE FURNITURE
- COFFEE MACHINES
- CATERING SUPPLIES
- FIRST AID
- TEA/COFFEE SUPPLIES



sales@betapak.co.uk



(01983) 721100



www.betapak.co.uk

QUEENS OF 2017

Nikita, Libby, Baylee, Phoebe, Lily-??? & Jessica



Nikita, 14, attends Sandown Bay Academy where she enjoys Science, Maths, English, PE and Performing Arts. Nikita is an army cadet and rides horses.

Phoebe 15, is currently studying at Christ the King College, Newport where she looks forward to Dance and Textiles classes. She is part of the student committee for Rock Challenge.

Baylee, 13, also attends Christ the King College and her favourite subjects are PE, Science, Art and Maths. In her free time she loves trampolining, dancing, singing and acting.

Libby, 9, attends St Blasius Primary Academy where she enjoys Maths, Art and Computing. Outside school she likes walking, Brownies and the cinema.

Jessica is a pupil at Brading C of E Primary School where her favourite subjects are Art and English. When not at school she enjoys drawing and sleeping!

Lily-??? is home-schooled and particularly enjoys History. Hobbies include dancing and singing.

Congratulations to all six girls on being chosen, and we hope they have a fun, memorable summer!

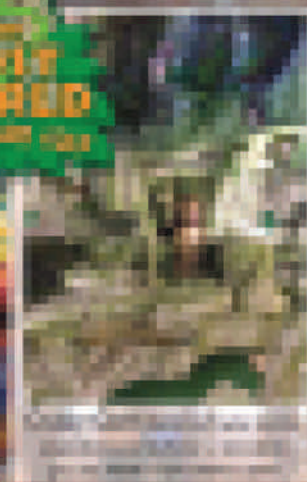
SANDOWN PIER

100 FREE METERS

a whole day's fun in one!

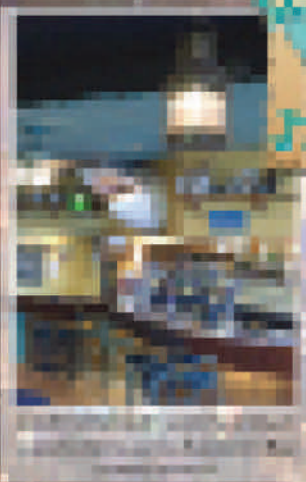
FREE CALIFORNIA FLAGSHIP SPECIAL PASS

THE
WORLD
AMUSEMENT PARK

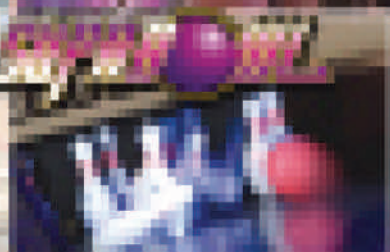


THE WOODS
A roller coaster that winds through a lush forest.

THE
JACKS



THE JACKS
A large indoor arena for live music and entertainment.



THE BOWLING
A bowling alley with a variety of bowling balls and lanes.



THE WHEEL
A colorful building with a sign that says 'THE WHEEL'.

AND ALL THAT IS NOT ENOUGH FOR
The Dodgems • Jacks Ride • Childrens Ride
Play off the fence in Amusement Mornings

Window Spotting fun for all ages Competition

A popular contest which is a firm favourite for all ages!

The Window Spotting contest involves walking around the town looking in shop windows to find things they don't usually sell!

Collect your FREE entry form at Sandown Carnival Outlet Shop - 77a High Street, opposite Esplanade Road anytime from Saturday 15th July 2017.

Return your completed form to the shop by 3:00pm on SATURDAY 29th July - Main Carnival Day - for a chance to win!

CASH PRIZES TO BE WON!

1st prize: £25 2nd prize: £10 3rd prize: £10



**JOIN
IN!**

It's never been easier to join in and take part in Sandown Carnival!

If you belong to an organisation, own a business or are just a group of friends or family, you can join in the fun! You don't have to have a large float - you can turn up as a pedestrian, or decorate a small trailer, bicycle, hand-cart, car or van instead.

Simply arrive in time for judging and you could even win a prize, or find yourself in the newspaper, on YouTube, the radio or even TV!

IT'S NEVER TOO LATE - you can build a costume or float in a couple of days - so why wait? It's an ideal opportunity to involve your children in a community activity - memories they will treasure forever.

Sandown Carnival - the Island's FRIENDLIEST carnival!



Beach Huts For Hire.

Eastern Beach, Sandown

www.sandownbeachhuts.co.uk



Beach hut rental includes:-

- 3 Deckchairs
- Windbreak
- Table and Chairs
- Use of shared Kitchenette

DAILY OR WEEKLY HIRE

2018 EVENT DATES

CHILDREN'S DAY

Friday 27th July 2018

MAIN CARNIVAL

Saturday 28th July 2018

ILLUMINATED CARNIVAL

Wednesday 29th August 2018

FIREWORKS & CELEBRATIONS

Saturday 3rd November 2018

SANDOWN
BAPTIST
CHURCH
PRESENTS

God's
Paintbrush

OUR THEMED FLOWER FESTIVAL FOR 2016

Friday 22 July noon to 4pm

Saturday 23 July 10am to 5pm

Sunday 24 July 2pm to 4pm

at our church in

Station Avenue

PO36 8HB

Free entry
(Donations Welcome)

Tea, coffee & cake will be on sale
<http://www.sandownbaptist.church>

TREASURE HUNT!

Can you find your way around our Treasure Hunt?

Pick up your entry form from the Carnival Outlet Shop - 77a High St (opposite Esplanade Rd) anytime from Saturday 15th July 2017.

Then answer a series of questions which will take you on a walk around Sandown Town Centre in order to obtain the correct answers!

Return your completed forms, which will include a tiebreaker question (or two!) before 3:00pm on Saturday 29th July (Main Carnival Day) to be in with a chance to win our



*"Aaarr me hearties!
Can ye answer me
riddles? There be CASH
for the winner!"*



CASH PRIZES!

1st prize: £25
2nd prize: £10
3rd prize: £10



Carnival Princess Competition



ABOVE

Last year's Carnival Princess

The Carnival Queens have been chosen, and will be riding the Sandown Carnival float ... but for one lucky young lady a VIP trip at the head of the Main Carnival on Saturday 29th July awaits!

The competition is open to local residents as well as those here on holiday.

To enter the contest, pick up an entry form from the Sandown Carnival Outlet, 77a High Street (opposite Esplanade Road) and return it to us by MID-DAY on Friday 28th July.

The winner will be announced during prize-giving after the Children's Day procession later that day.

Entrants must be aged 7 or over and will ride in a special vehicle at the front of the carnival. You'll receive LOTS of attention from the crowd!

CARNIVAL QUIZ NIGHT

Sunday 23rd July
at The Castle Inn,
Fitzroy Street,
Sandown 8pm

£2 per person
entry

CASH PRIZES TO BE WON!!

All proceeds go to Sandown Carnival Association to support our events throughout the year. Please come along for a great night out!



CAR TREASURE HUNT

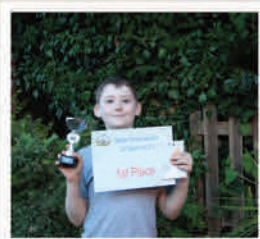
Thursday 27th July 6:00pm

Our Car Treasure Hunt starts from Sandown Zoo at 6:30pm and finishes just along the road at Browns Golf & Cafe.

A family-friendly fun event which will take you on a whistle-stop tour of the Island whilst collecting answers to a range of questions and clues.

A range of prizes are on offer, with trophies kindly sponsored by Browns Golf & Cafe.

It's just **£3 per car** to enter with all proceeds going to Carnival funds.



Children's Procession Friday 28th July

From Sandham Grounds. Assemble 2:00pm.
Judging 2:15pm. Parade leaves 3:00pm.



Prizegiving following the parade
takes place at Eastern Gardens

Judging Classes:

- up to 6 years of age
- PAIRS up to 10 years of age
- 7 to 10 years of age
- 11 to 15 years of age
- PAIRS 11 to 15 years of age
- handcarts & cycles
- GROUPS of 8 or fewer people
- GROUPS of 9 or more people
- BEST OVERALL

The procession will be led by Unidos Samba, along with the **Sandown Carnival Queens** float along the special route shown opposite, finishing at Eastern Gardens where prizes will be presented by local dignitaries.

ALL children entering in fancy dress will receive a small prize!

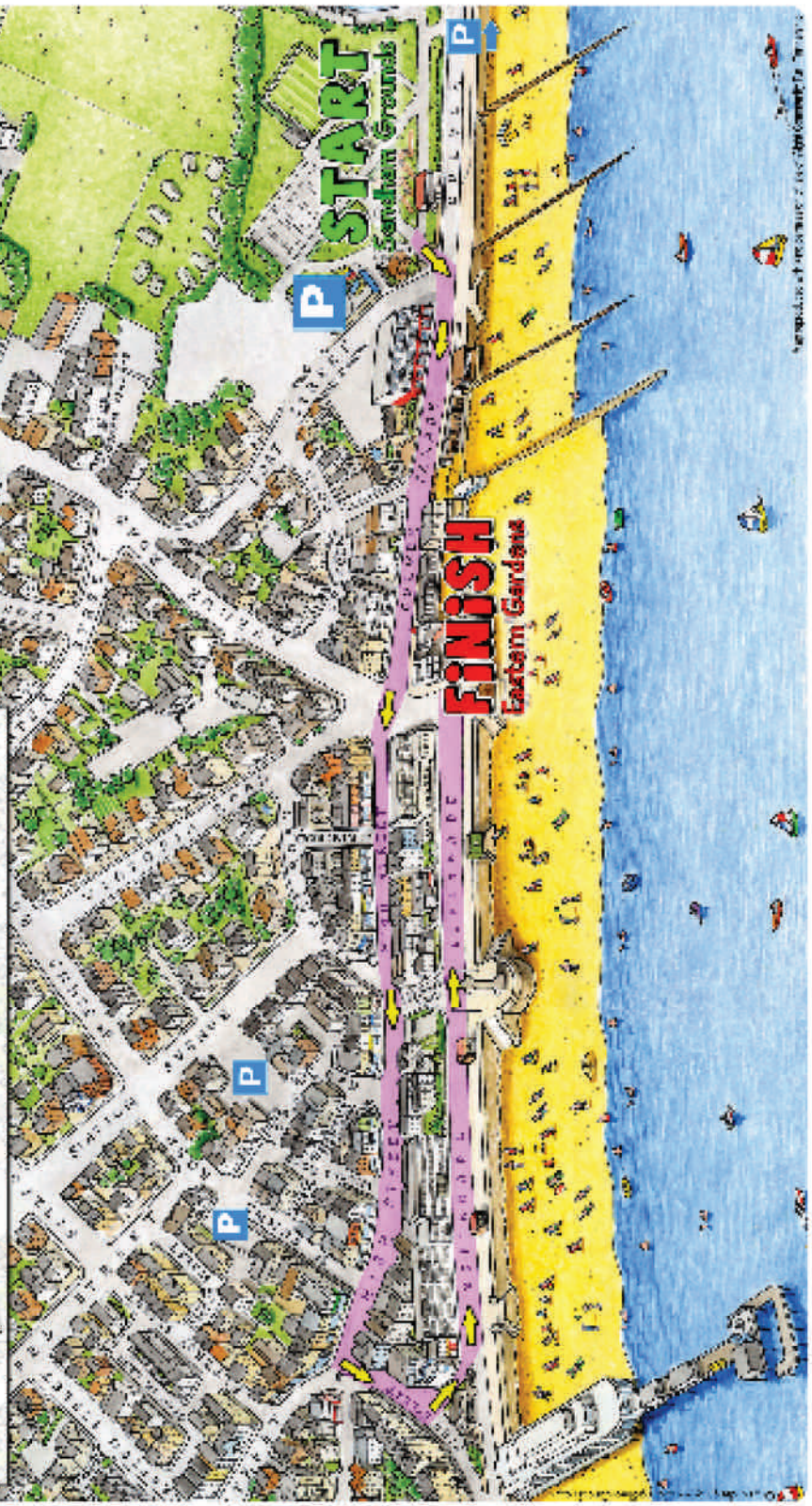
The procession ends a day of fun activities - see page 18 for more details.



CHILDREN'S PARADE

ROUTE INFORMATION FOR PARTICIPANTS

- Meeting takes place at Samlham Grounds at 20:00pm
- Participants begin parade at 20:00pm
- Floats may join at Culver Parade space between 22:00pm
- Parade ends at Eastern Gardens at 23:00pm
- Prizegiving takes place at Eastern Gardens





PARADE ROUTE

KEY: ★ START AND FINISH

PR

P CAR PARKING



TOILETS



ROUTE

PROCESSION → ROUTE

FIRST AID / LOST CHILD



PLEASE!

KEEP CLEAR of procession vehicles at all times
 REMAIN BEHIND BARRIERS where these are provided for your safety
 DO NOT THROW objects or coins at the vehicles or procession

GIVE GENEROUSLY to the official collectors so that we can do this again next year!

Map reproduced with kind permission of Isle of Wight Community Flat Partnership

PROGRAMME

Day-By-Day guide to this year's Carnival events

Car Treasure Hunt - Thu 27th July @ The Zoo / Browns

6:00pm Registration at Sandown Zoo car park - look out for the flags! £3 per car

Children's Day - Fri 28th July @ Eastern Gardens

ALL DAY Fun sideshows including Face Painter, Competitions and more!

ALL DAY **Central Discos** spinning the latest tunes and dance hits

ALL DAY FREE trampolines courtesy of the **Sundial Cafe**

11:00am **Magic by Andy**

12:00pm FREE balloon creations by **Twisted Inflations**

2:30pm **Unidos Samba** at Sandham Grounds

Children's Parade starts at Sandham Grounds and finishes at Eastern Gardens

2:00pm Assemble for Judging and photographs at **Sandham Grounds**

2:15pm Judging commences - don't be late!

3:00pm Procession leaves - arrives Eastern Gardens at approx. 3:45pm for prizes

Main Carnival Day - Sat 29th July @ Eastern Gardens

11:00am Company B at Eastern Gardens until 1:00pm

1:00pm Magic by Andy at Eastern Gardens until 2:00pm

2:00pm Wight Bells (Morris dancers) at Eastern Gardens until 3:00pm

3:00pm Derek Sandy (live music) at Eastern Gardens until 5:00pm

Main Carnival parade starts and finishes at Culver Parade / The Esplanade

5:00pm Registration

6:00pm Judging commences

7:00pm Procession leaves and parades around Sandown - see map in centre pages

Illuminated Carnival Day - Wed 30th August @ The Beach

2:00pm Family beach sports at Eastern Gardens until 4:00pm

Illuminated Carnival parade starts and finishes at Culver Parade / The Esplanade

6:30pm Registration

7:30pm Judging commences

8:30pm Procession leaves and parades around Sandown

November Celebrations - Sat 4th November @ The Pier

6:00pm Music and fun along the Esplanade with lots of sideshows, fire performers and much more

8:00pm Grand firework finale from Sandown Pier

All timings are approximate. Some events are weather-dependant. On-the-day changes or announcements will be posted to our Twitter feed

Sandown Carnival Association accepts no responsibility for any accident or injury by any person. Exhibitors, Competitors and Spectators taking part in any event do so at their own risk. All monies collected are the property of Sandown Carnival Association.



PRE-CARNIVAL

Entertainment to get you in the party spirit!



Company B - Eastern Gardens
11:00am - 1:00pm



Magic by Andy - Eastern Gardens
1:00pm - 2:00pm



Wight Bells - Eastern Gardens
2:00pm - 3:00pm



Derek Sandy - Eastern Gardens
3:00pm - 5:00pm

Main Carnival Procession

Saturday 29th July

Assemble 5:00pm. Judging 6:00pm. Parade leaves 7:00pm.

Judging Classes:

- A - Queens
- B - Youth organisations
- C - Trade
- D - Individuals
- E - Children's fancy dress
- F - Adult fancy dress
- G - Group fancy dress
- H - Handcarts & cycles
- I - School / community groups

For the **CARNIVAL ROUTE** see centre pages.

Best viewpoints: Beachfield Rd, Royal Crescent, Melville St, Fitzroy St, Station Avenue, Albert Rd

FOR YOUR SAFETY

- keep out of the road at **ALL TIMES** during the procession
- remain **BEHIND BARRIERS** or fencing where provided
- **DO NOT THROW** objects or coins - use the buckets provided

All monies collected are the property of Sandown Carnival Association.

For full joining instructions and safety guides please visit www.sandowncarnival.com

For last minute updates in case of bad weather, follow [@sandowncarnival](https://twitter.com/sandowncarnival) on Twitter or visit our website (above).



Lake Cleaning & Catering Supplies



Swan House,
Unit's 4/5 East Yar Road,
Sandown Isle of Wight PO36 9AY

Tel: 408200 Fax: 407177
Email: sales@lakecleaning.co.uk
www.lakecleaning.co.uk

We are proud to be associated with
Sandown Carnival Association

Handmade Fashions by

Artisans

Designs - Alterations - Repairs - Accessories

32 High Street, Shanklin
Tel: 07946 356771
Bridal & Prom Specialists





**ROAD
CLOSED**



CARNIVAL DAY TRAVEL ADVICE

CAR PARKS are marked on the Route Map (centre pages) but remember that these will become very busy and that usual parking terms and conditions will still apply.

The largest car parks most likely to have space include: The Heights, Fort Street, Sandown Zoo, Yaverland.

PARKING RESTRICTIONS will be in place across the majority of the carnival route and will be clearly signed in accordance with IW Council requirements. Traffic cones and prohibition notices will be displayed. These restrictions allow the procession to proceed unhindered and to help ensure spectator safety.

ALL parking restrictions will be strictly enforced, involving towing away where necessary.

ROAD CLOSURES - prior to and during the procession, various roads around the town will be closed for safety purposes. The main closure affects the High Street along almost its entire length, Culver Parade and The Esplanade. However, other roads are also affected for shorter periods - refer to the centre pages for route details - between approx. 5:00pm and 9:00pm.

PUBLIC TRANSPORT operators will run a normal timetable throughout the day. Buses will divert along Broadway during road closures instead of coming into the town centre (between approx. 6:30pm and 8:30pm). Therefore, during these times, for buses in the Ryde direction walk to the roundabout by Moreys / Esso. For buses in the Newport/Shanklin direction, walk to The Heights.

Follow [@southernvectis](#) or [@NRE_Island_Line](#) on Twitter for latest transport updates.

PLEASE CONSIDER USING PUBLIC TRANSPORT



SANDOWN BAY REGATTA



Sunday 14th August 2016

A fun day for all the family at Sandown's
historic seafront!

From 10:00am until late...



Including...

- ★ Sailing
- ★ Sandcastle competition
- ★ Round the pier swim
- ★ Children's shore sports
- ★ Charity stalls
- ★ Canoe races

Evening entertainment- Including live music, prize giving
and ending with a firework display at 21.30

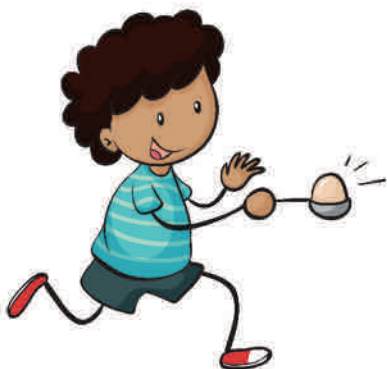


For more information, contact Kate Roye on 07593803807



PRE-CARNIVAL

Family Beach Fun! 2:00pm - 4:00pm @ Eastern Gardens



Come and join us for an afternoon of fun on the beach before the Illuminated Carnival, featuring a range of classic games including:

- Beach Sack Races
- Egg & Spoon Race
- Three Legged Race
- Tug o' War
- Flip Flop Flinging
- Sprints - various age groups
- Ladies' Race and Men's Race

FREE to enter - and all entrants receive a small prize!

An advertisement for Ladies' Realm. It features a photograph of three women standing side-by-side, showcasing different styles of clothing. The woman on the left is wearing a dark floral dress. The woman in the middle is wearing a pink and white striped cardigan over a white top and white pants. The woman on the right is wearing a blue and white striped t-shirt with a floral pattern on the chest and dark pants. To the right of the women is the Ladies' Realm logo, which consists of a stylized 'LR' inside a square, with the text 'LADIES' REALM' underneath. Below the logo, the text reads 'Pick up the perfect pieces for style and elegance'. At the bottom of the advertisement, there are two columns of text providing store information: 'THE LADIES' REALM STORE' with the phone number '0945 832242' and 'LADIES' REALM STORE' with the phone number '0945 832242'.

LADIES' REALM

Pick up
the perfect
pieces for style
and elegance

THE LADIES' REALM STORE
0945 832242

LADIES' REALM STORE
0945 832242

Illuminated Carnival Wednesday 30th August

Assemble 6:30pm. Judging 7:30pm. Parade leaves 8:30pm.

Judging Classes:

A - Queens; B - Youth organisations; C - Trade
D - Individuals; E - Children's fancy dress; F - Adult fancy
dress; G - Group fancy dress; H - Handcarts & cycles;
I - School / community groups

For the **CARNIVAL ROUTE** see opposite and centre pages.

Best carnival viewpoints: Beachfield Rd, Royal Crescent,
Melville St, Fitzroy St, Station Avenue, Albert Rd

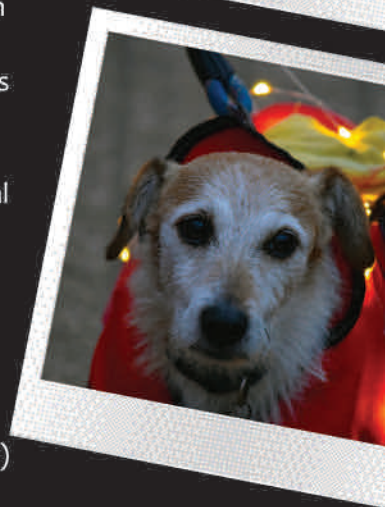
FOR YOUR SAFETY

- keep out of the road at **ALL TIMES** during the procession
- remain **BEHIND BARRIERS** or fencing where provided
- **DO NOT THROW** objects or coins - use the buckets provided

All monies collected are the property of Sandown Carnival Association

For full joining instructions and safety guides please visit
www.sandowncarnival.com

For last minute updates in case of bad weather, follow
[@sandowncarnival](https://twitter.com/sandowncarnival) on Twitter or visit our website (above)





CARNIVAL DEVELOPMENT FUND

Continuing its drive to encourage people to take part and enhance Sandown's Carnival parades whilst developing our participants' carnival arts, the Development Fund is open to non-profit organisations, schools, clubs, associations or even a group of friends who are interested in taking part in our events. The fund allows successful bidders to take part, helping fund the purchase of materials, hiring equipment, covering travel costs, etc.



This year we are delighted to have been able to support five unique projects!

This will see lots of additional people taking part in the carnival processions as a direct result of our support, which has only been made possible through YOUR generosity.

Congratulations go to:

- The Wight Strollers
- The Parsons Family
- Dance Vibez
- The Bloomfield Family
- The Moody Grandchildren

We look forward to seeing your creations!



SANDOWN CARNIVAL OUTLET



Helping raise the £40,000 it takes to run Sandown Carnival events each year, our High Street shop is staffed by volunteers and stocked with a wide range of quality donated clothes, books, toys, household goods and bric-a-brac.

Our shop is light and airy with friendly, approachable assistants.

Every sale we make helps to put a smile on someone's face come Carnival day!

Pop in next time you're passing and have a browse!

DONATIONS WELCOME

We're always happy to receive donations - just drop them off at the shop any time we are open.

VOLUNTEERS NEEDED!

Can you spare a few hours to help out?

We always appreciate volunteer help either in the shop or helping with Carnival preparations.

Simply pop in to the shop for a chat and to pick up a details form, or email us at: friends@sandowncarnival.com

We'd love to hear from you!


WHERE TO FIND US

We're at 77a High Street, Sandown, just down the hill slightly from the Co-op and facing Esplanade Road. Parking is usually available in Albert Rd, on The Esplanade or in the Station Avenue car park approx. 100m away.

SUPPORTING OTHERS

Unsaleable children's clothing and soft toys are donated annually to Stupini Kids - supporting less fortunate children in Romania and other countries. More details at www.stupinikids.org





This year's November Celebrations take place on Saturday 4th November.

As last year **THERE WILL BE NO CARNIVAL PARADE** due to lack of support, however there will be lots going on around the pier and beach areas instead!

Keep an eye on our website www.sandowncarnival.com (or follow us on Facebook) for more details closer to the event date!

SATURDAY

NOVEMBER 4TH



Sandown Carnival Association **urgently** needs new volunteers to help keep these great events running next year.

Can **YOU** help, in any capacity?

For more information drop us a line!

Email: friends@sandowncarnival.com

Visit: sandowncarnival.com/volunteering

or find us on Facebook!

